



# Echoscan US-4000 / 500



THE ART OF EYE CARE

## Three in One\*

The US-4000 comprehensive ultrasound device includes B-scan, Biometry and Pachymetry. Combining all three functions in one compact and innovative device brings a new image to your practice.

\*Only for the US-4000

The US-500 includes Biometry and Pachymetry.

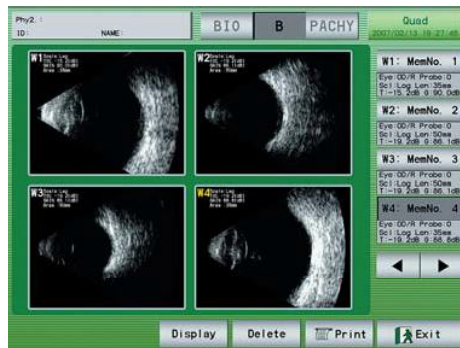
- COMPACT
- ONLY 8.5 kg
- TOUCH PANEL DISPLAY
- NO PC REQUIRED
- TILTABLE COLOR LCD



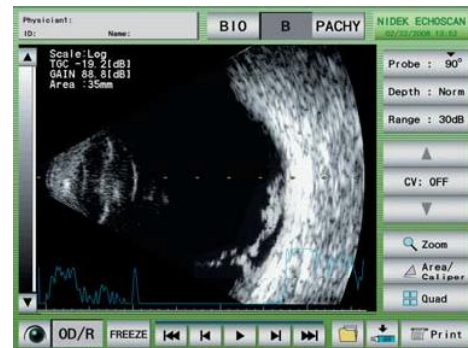
## B-scan\*

### A Crisp and Clear Image

The results are high quality images, which are essential for accurate analysis. The key to achieving high quality images is through scanning 400 lines over 60° which is displayed on a 1024 x 768 XGA monitor. High contrast of resonated signals and the high quality LCD monitor provide the ideal images for the most accurate diagnosis.



Multi Image Display Function



Cross Vector Mode

### Internal Printer

B-scan image is easily printed with the internal thermal printer and may be attached to the patient's medical record sheet.

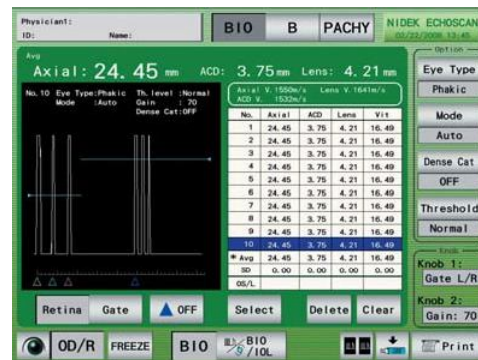


\*Only for the US-4000

## ■ Biometry

### Rapid, Accurate and Easy to Use

Using new algorithms, axial length measurements and IOL power calculations are performed twice as rapidly as the conventional model. Measurement accuracy for dense cataracts and existing opacities is accomplished by pressing the "Dense Cat" switch and "Gate" switch.



Biometry Image



Customized IOL Calculation

## ■ Pachymetry\*1

The US-4000 / 500 pachymetry mode offers precise measurement of the corneal thickness within a  $\pm 5 \mu\text{m}$  error.



45° fixed Probe\*2



Straight Probe

\*1 The model without pachymetry is also available.

\*2 Provided as standard accessories depending on the configuration.

## ■ Easy Data Transfer

Data is easily stored through USB memory and LAN. Utilizing the special interface cable, keratometry values measured by any NIDEK ARK are automatically imported into the US-4000 / 500 for easy IOL power calculation.